

Nr. 2

der Rothirsch; das Nashorn; das Flusspferd;  
der Blauwal

Nr. 4

a)  $4\text{ t } 500\text{ kg} = 4500\text{ kg}$

$4\text{ t } 50\text{ kg} = 4050\text{ kg}$

$4\text{ t } 5\text{ kg} = 4005\text{ kg}$

b)  $7\text{ t } 800\text{ kg} = 7800\text{ kg}$

c)  $1\text{ t} = 1000\text{ kg}$

$10\text{ t} = 10000\text{ kg}$

$100\text{ t} = 100000\text{ kg}$

d)  $\frac{1}{2}\text{ t} = 500\text{ kg}$

$1\frac{1}{2}\text{ t} = 1500\text{ kg}$

$10\frac{1}{2}\text{ t} = 10500\text{ kg}$

e)  $11\text{ t } 500\text{ kg} = 11500\text{ kg}$

$12\text{ t } 30\text{ kg} = 12030\text{ kg}$

$15\text{ t } 2\text{ kg} = 15002\text{ kg}$

f)  $15\text{ t} = 15000\text{ kg}$

$32\text{ t} = 32000\text{ kg}$

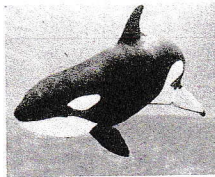
$23\text{ t} = 23000\text{ kg}$

# Lösungen

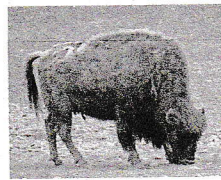
## Gewicht – Kilogramm und Tonne, Wiederholung

1 Ordne die Tiere nach dem Gewicht. Beginne mit dem leichtesten Tier.

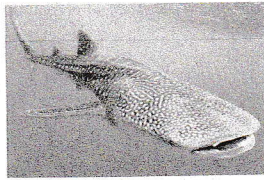
a)



der Orca: 4t 600kg



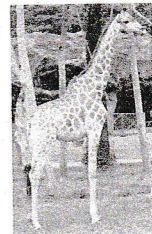
der Bison: 1050 kg



der Walhai: 12t



das Pferd: 1t 100kg



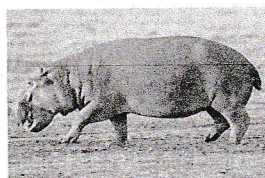
die Giraffe: 800kg

die Giraffe, der Bison, das Pferd, der Orca, der Walhai

b)



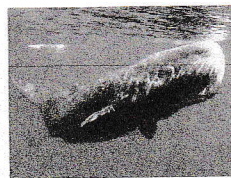
der Elefant: 4t 800kg



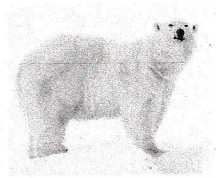
das Nilpferd: 2300 kg



die Kuh: 720kg



der Pottwal: 39t



der Eisbär: 450kg

der Eisbär, die Kuh, das Nilpferd, der Elefant, Pottwal

2 Schreibe in Kilogramm.

a) 5t 0kg = 5000 kg

6t 30kg = 6030 kg

7t 400kg = 7400 kg

8t 5kg = 8005 kg

3t 20kg = 3020 kg

8t 700kg = 8700 kg

b) 10t 0kg = 10000 kg

11t 80kg = 11080 kg

15t 700kg = 15700 kg

20t 500kg = 20500 kg

21t 40kg = 21040 kg

29t 3kg = 29003 kg

c) 7t = 7000 kg

70t = 70000 kg

703t = 703000 kg

$\frac{1}{2}$ t = 500 kg

$1\frac{1}{2}$ t = 1500 kg

$10\frac{1}{2}$ t = 10500 kg

3 a)  $868 : 7 = 124$

$$\begin{array}{r} 7 \\ 16 \\ 14 \\ \hline 28 \\ 28 \\ \hline 0 \end{array}$$

b)  $836 : 4 = 209$

$$\begin{array}{r} 8 \\ 03 \\ 0 \\ \hline 36 \\ 36 \\ \hline 0 \end{array}$$

c)  $774 : 6 = 129$

$$\begin{array}{r} 6 \\ 17 \\ 12 \\ \hline 54 \\ 54 \\ \hline 0 \end{array}$$

d)  $5976 : 2 = 2988$

$$\begin{array}{r} 4 \\ 19 \\ 18 \\ \hline 17 \\ 16 \\ \hline 16 \\ 16 \\ \hline 0 \end{array}$$

e)  $3834 : 3 = 1278$

$$\begin{array}{r} 3 \\ 08 \\ 6 \\ \hline 23 \\ 21 \\ \hline 24 \\ 24 \\ \hline 0 \end{array}$$

124	129
209	1278
2038	2988

# Lösungen

1 Gib das Gewicht in drei verschiedenen Schreibweisen an.

a)

kg	t und kg	t
5900 kg	5t 900 kg	5,900 t
3090 kg	3t 90 kg	3,090 t
50 kg	0t 50 kg	0,050 t
4311 kg	4t 311 kg	4,311 t
10300 kg	10t 300 kg	10,300 t
9503 kg	9t 503 kg	9,503 t
12031 kg	12t 31 kg	12,031 t
11203 kg	11t 203 kg	11,203 t

b)

kg	t und kg	t
3514 kg	3t 514 kg	3,514 t
5010 kg	5t 10 kg	5,010 t
10513 kg	10t 513 kg	10,513 t
10502 kg	10t 502 kg	10,502 t
8901 kg	8t 901 kg	8,901 t
5217 kg	5t 217 kg	5,217 t
8052 kg	8t 52 kg	8,052 t
4 kg	0t 4 kg	0,004 t

2 Setze ein.  $>$   $<$   $=$

- a)  $2t > 1600\text{ kg}$     b)  $7000\text{ kg} = 7t$     c)  $30t > 3000\text{ kg}$     d)  $520\text{ kg} > 0,500t$   
 $4t > 400\text{ kg}$      $290\text{ kg} < 2t$      $4,000t = 4000\text{ kg}$      $1400\text{ kg} > 1,300t$   
 $3t = 3000\text{ kg}$      $8250\text{ kg} > 8t$      $6,000t = 6000\text{ kg}$      $2,615t > 2,600t$   
 $7t < 7020\text{ kg}$      $9550\text{ kg} > 9,5t$      $8,02t < 8200\text{ kg}$      $3810\text{ kg} > 3,800t$

3 Ordne nach dem Gewicht. Beginne mit dem leichtesten Gewicht.

- a)  $5,3t$      $5\frac{1}{2}t$      $5030\text{ kg}$      $535\text{ kg}$      $0,5\text{ kg}$      $5,003t$   
 $0,5\text{ kg}$  ;  $535\text{ kg}$  ;  $5,003t$  ;  $5030\text{ kg}$  ;  $5,3t$  ;  $5\frac{1}{2}t$
- b)  $2,39t$      $2039\text{ kg}$      $2,500t$      $9,32t$      $0,932t$      $2,359t$   
 $0,932t$  ;  $2039\text{ kg}$  ;  $2,359t$  ;  $2,39t$  ;  $2,500t$  ;  $9,32t$
- c)  $12t$      $0,121t$      $1212\text{ kg}$      $125\text{ kg}$      $12012\text{ kg}$      $0,5t$   
 $0,121t$  ;  $125\text{ kg}$  ;  $0,5t$  ;  $1212\text{ kg}$  ;  $12t$  ;  $12012\text{ kg}$

4 Wie viel Kilogramm fehlen?

a)

1 t	900 kg	10 kg	6 kg	22 kg	350 kg	510 kg	5 kg	490 kg
	100 kg	990 kg	994 kg	978 kg	650 kg	490 kg	995 kg	510 kg

b)

0,5 t	250 kg	10 kg	45 kg	5 kg	500 kg	24 kg	50 kg	33 kg
	250 kg	490 kg	455 kg	495 kg	0 kg	476 kg	450 kg	467 kg

# Mathebuch S. 83

# Lösungen

## \* Nr. 3

Beispiele: Elefant, Lkw, Schiff, Walfhai, Krokodil, Kran,  
ICE, Straßenbahn

## \* Nr. 5

- a) Rechnung:  $120 \text{ t} : 3 \text{ t} = 40$   
Antwort: 40 Blauwaljunge sind etwa so schwer wie ein Muttertier.
- b) Rechnung:  $3 \text{ t} + 15 \text{ t} = 18 \text{ t}$   
Antwort: Ein Blauwaljunges wiegt nach 7 Monaten etwa 18 t.
- c) Rechnung:  $3 \text{ t} \cdot 9 = 27 \text{ t}$   
Antwort: Nach einem Jahr wiegt ein Blauwaljunges etwa 27 t.

# Mathebuch S. 84

1. a)  $4300 \text{ kg} = 4 \text{ t } 300 \text{ kg} = 4,300 \text{ t}$   
 $430 \text{ kg} = 0 \text{ t } 430 \text{ kg} = 0,430 \text{ t}$   
 $43 \text{ kg} = 0 \text{ t } 43 \text{ kg} = 0,043 \text{ t}$   
 $4 \text{ kg} = 0 \text{ t } 4 \text{ kg} = 0,004 \text{ t}$
- b)  $10200 \text{ kg} = 10 \text{ t } 200 \text{ kg} = 10,200 \text{ t}$   
 $1020 \text{ kg} = 1 \text{ t } 020 \text{ kg} = 1,020 \text{ t}$
- c)  $0,300 \text{ t} = 0 \text{ t } 300 \text{ kg} = 300 \text{ kg}$   
 $0,030 \text{ t} = 0 \text{ t } 30 \text{ kg} = 30 \text{ kg}$
- d)  $2,700 \text{ t} = 2 \text{ t } 700 \text{ kg} = 2700 \text{ kg}$   
 $2,070 \text{ t} = 2 \text{ t } 70 \text{ kg} = 2070 \text{ kg}$
- e)  $2,4 \text{ t} = 2 \text{ t } 400 \text{ kg} = 2400 \text{ kg}$   
 $13,21 \text{ t} = 13 \text{ t } 210 \text{ kg} = 13210 \text{ kg}$   
 $0,321 \text{ t} = 0 \text{ t } 321 \text{ kg} = 321 \text{ kg}$   
 $4,5 \text{ t} = 4 \text{ t } 500 \text{ kg} = 4500 \text{ kg}$
- f)  $0,23 \text{ t} = 0 \text{ t } 230 \text{ kg} = 230 \text{ kg}$   
 $320 \text{ kg} = 0 \text{ t } 320 \text{ kg} = 0,320 \text{ t}$   
 $3 \text{ t } 90 \text{ kg} = 3,090 \text{ t} = 3090 \text{ kg}$   
 $10 \text{ t } 1 \text{ kg} = 10,001 \text{ t} = 10001 \text{ kg}$
2. a)  $>, =, >$  b)  $=, <, >$  c)  $>, =, >$  d)  $<, <, =$
3. a)  $5 \text{ kg} / 500 \text{ kg} / 0,508 \text{ t} / 5 \text{ t} / 5,08 \text{ t}$   
b)  $7,02 \text{ kg} / 7,2 \text{ kg} / 0,7 \text{ t} / 720 \text{ kg} / 7,2 \text{ t}$   
c)  $42 \text{ kg} / 0,42 \text{ t} / 4,2 \text{ t} / 4,24 \text{ t} / 42 \text{ t}$

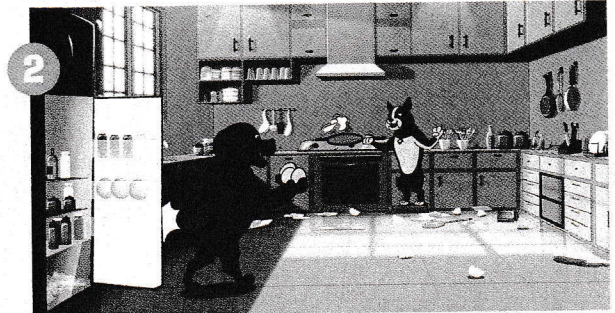
4. a)  $320 \text{ kg} + 680 \text{ kg} = 1000 \text{ kg}$   
 $490 \text{ kg} + 510 \text{ kg} = 1000 \text{ kg}$   
 $315 \text{ kg} + 685 \text{ kg} = 1000 \text{ kg}$
- b)  $520 \text{ kg} + 480 \text{ kg} = 1000 \text{ kg}$   
 $481 \text{ kg} + 519 \text{ kg} = 1000 \text{ kg}$   
 $32 \text{ kg} + 968 \text{ kg} = 1000 \text{ kg}$
- c)  $0,682 \text{ t} + 0,318 \text{ t} = 1 \text{ t}$   
 $0,345 \text{ t} + 0,655 \text{ t} = 1 \text{ t}$   
 $0,721 \text{ t} + 0,279 \text{ t} = 1 \text{ t}$
- d)  $0,652 \text{ t} + 0,348 \text{ t} = 1 \text{ t}$   
 $0,500 \text{ t} + 0,500 \text{ t} = 1 \text{ t}$   
 $0,830 \text{ t} + 0,170 \text{ t} = 1 \text{ t}$
- e)  $13 \text{ kg} + 987 \text{ kg} = 1000 \text{ kg}$   
 $812 \text{ kg} + 188 \text{ kg} = 1000 \text{ kg}$   
 $789 \text{ kg} + 211 \text{ kg} = 1000 \text{ kg}$

5. a) kg b) t c) kg d) kg e) t f) t
6. a) Nein, kann nicht stimmen.  
b) Ja, kann stimmen.  
c) Ja, kann stimmen.

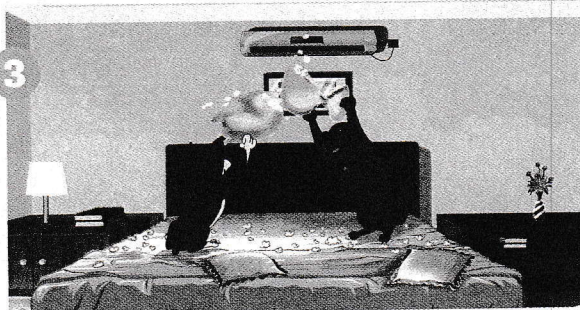
☆ 5 Look, read and circle True (✓) or False (✗).



1 'Ann, close the door to the living room so that Rocky can't get out.' (✓) (✗)



2 'Can you get me some more eggs, Rusty?' (✓) (✗)



3 'It's so boring.' (✓) (✗)



4 'Good boy. You're the best.' (✓) (✗)

☆☆ 6 Complete the sentences with the correct words. There's one word too many.

~~mess~~

~~fight~~

walk

~~dog~~

~~attic~~

- 1 Let's have a pillow fight in the bedroom.
- 2 We can play hide and seek in the attic.
- 3 There's a mess in the kitchen, the bedroom and the attic.
- 4 How did the dog get into the house?

☆☆☆ 7 Put the sentences in the correct order. Write 1-8.

- |  |                                       |
|--|---------------------------------------|
| (5) The two dogs have a pillow fight.              | (2) Their dog Rocky is at home.       |
| (4) Rocky makes some ham and eggs.                 | (1) Mr and Mrs White go for a walk.   |
| (3) Rocky's friend Rusty comes to visit Rocky.     | (6) They go and play 'Hide and seek'. |
| (8) The house is a mess. They can't understand it. | (7) Mr and Mrs White come home.       |